



# Assembly Instruction

ITEM NO: 8424BE-1  
RECLINING CHAIR

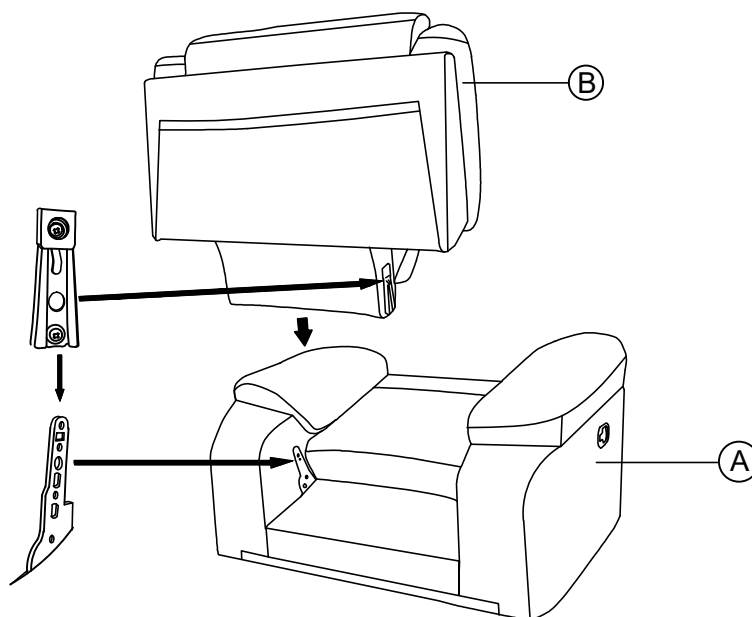


Note: Do not use power tools for assembly. Power tools increase the risk of over tightening which lead to spliting or cracking the wood.

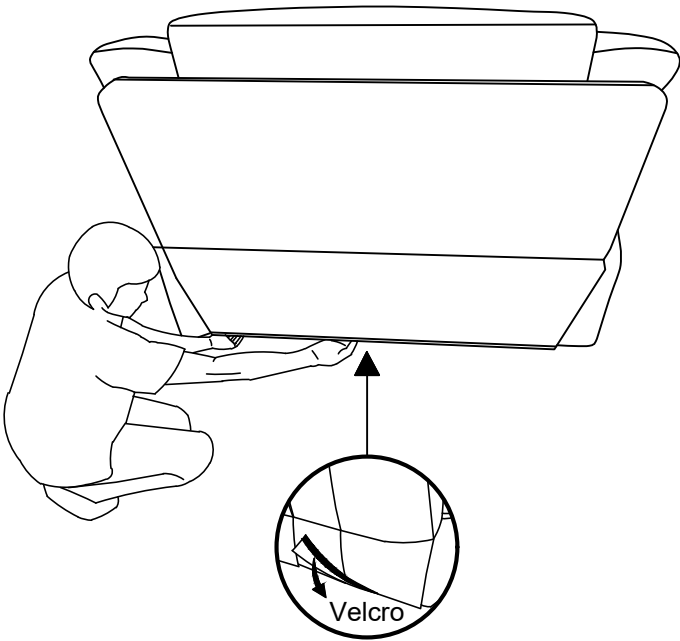
## Component list

| No. | Drawing   | Description | Qty  |
|-----|---|-------------|------|
| A   |  | Seat        | 1 PC |
| B   |  | Backrest    | 1 PC |

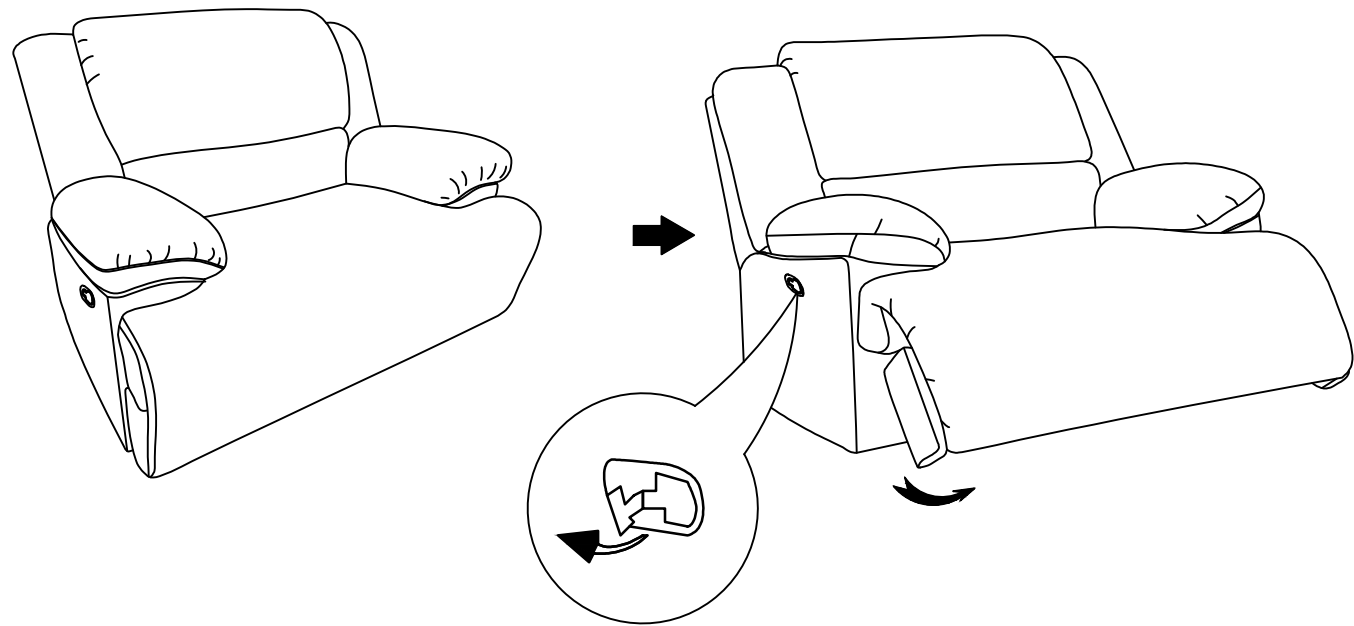
## STEP #1



STEP #2

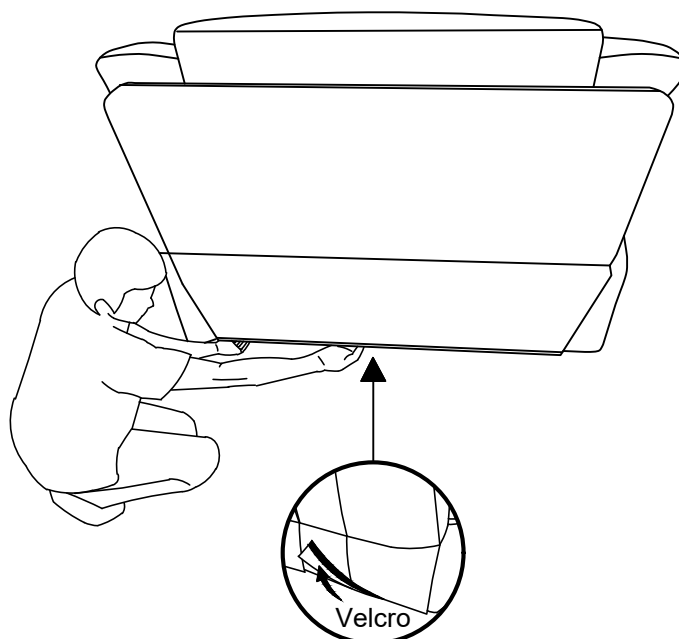


COMPLETED

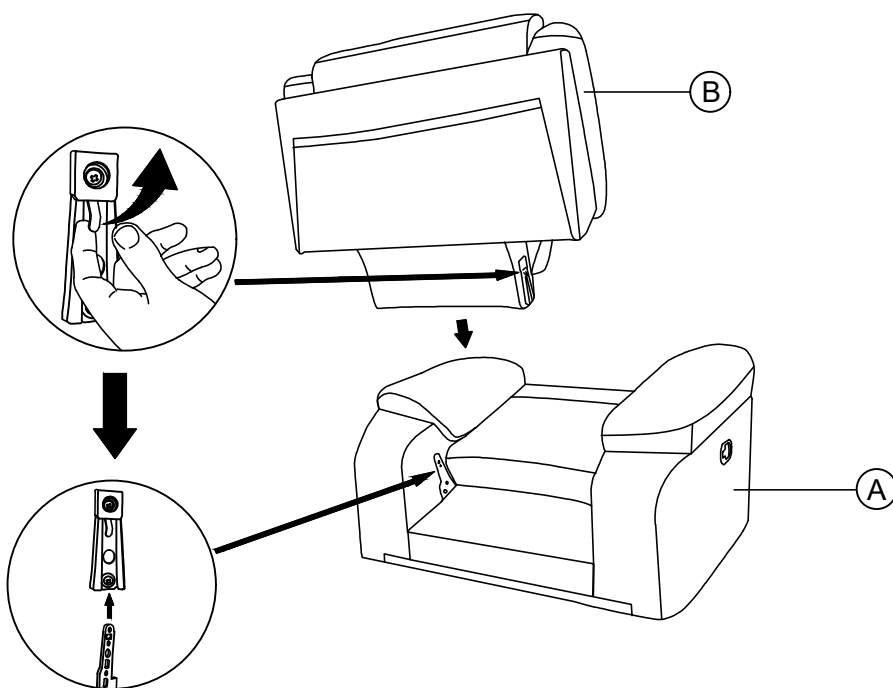


# Disassemble the back

## STEP #1 Back Rest remove



**STEP #2** To unlock the back of the recliner from its base, push up on the small metal hook built into the side of the recliner



**Care Instruction for Textured microfiber Furniture:**

In order to maintain the original appearance of your Textured microfiber Furniture, please follow below simple care procedures:

- Avoid exposing furniture directly to sunlight or heating and air conditioning outlets. Sunlight and or exposure to heating and air conditioning outlets will fade/damage Textured microfiber.
- Vacuum or wipe with a soft cloth to remove dust.
- Hardware may loosen over time. Periodically check to make sure all connection are tight, Re-tighten if necessary.



For items use on wooden floor, hard surfaces or carpets, it is recommended to Install protective pads under all legs and supports to avoid/prevent from damages/scratches and discoloration.